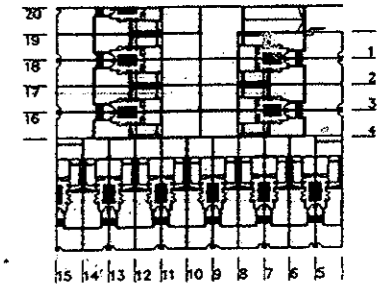


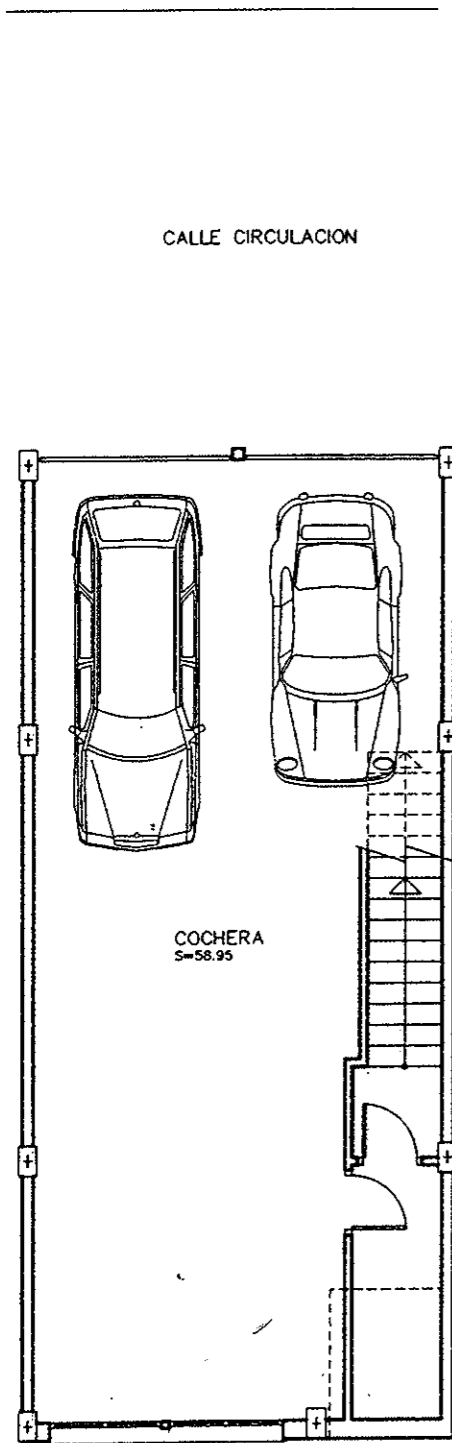
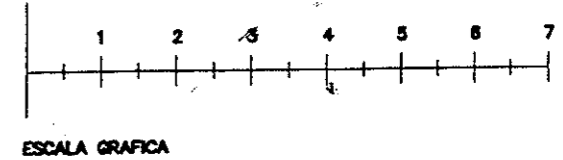
Residencial TURIN

VIVIENDA N° 6 - 8 - 12 - 14

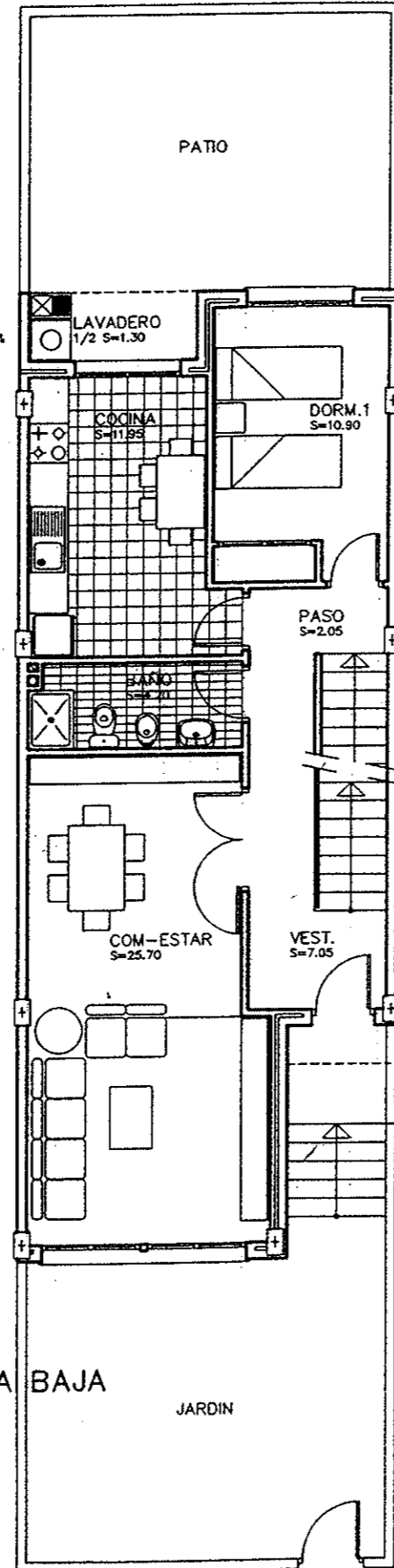
SUP.EDIFICADA EN SOTANO 103.55m² SUP.EDIFICADA EN VIVIENDA 141.00m² - 113,35 m². UTILES
 (INCLUIDA PARTE PROPORCIONAL CALLE CIRCULACION)



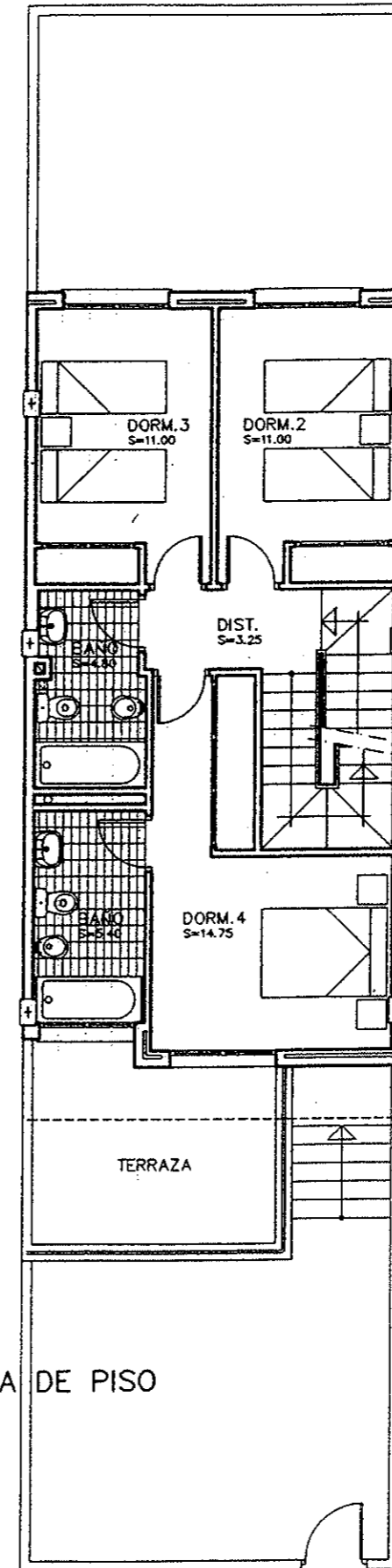
CONJUNTO EDIFICACION



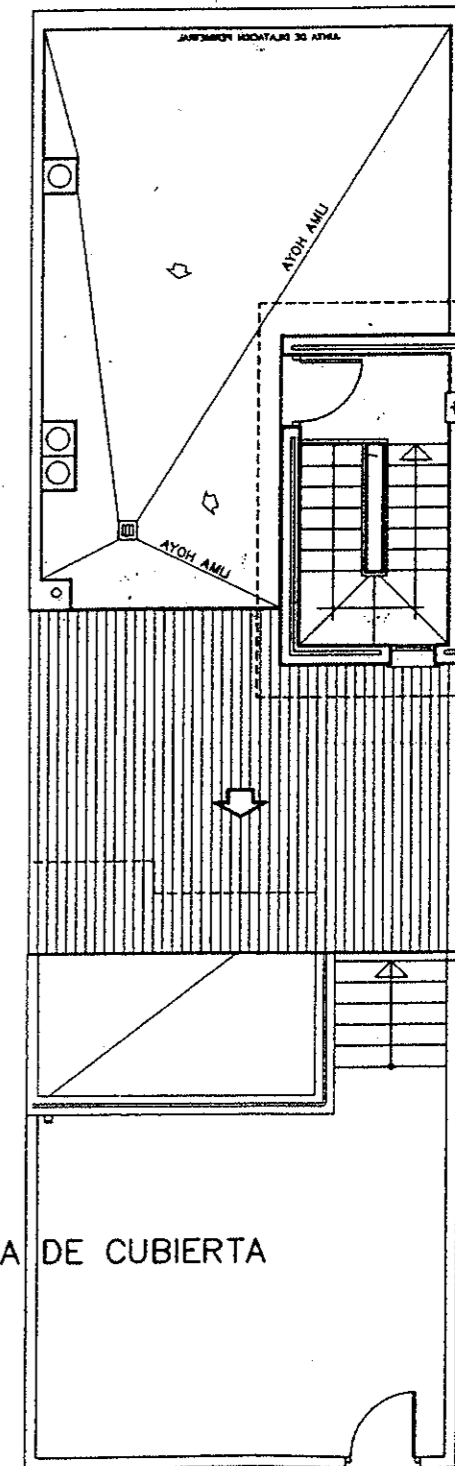
SEMISOTANO



PLANTA BAJA



PLANTA DE PISO



PLANTA DE CUBIERTA