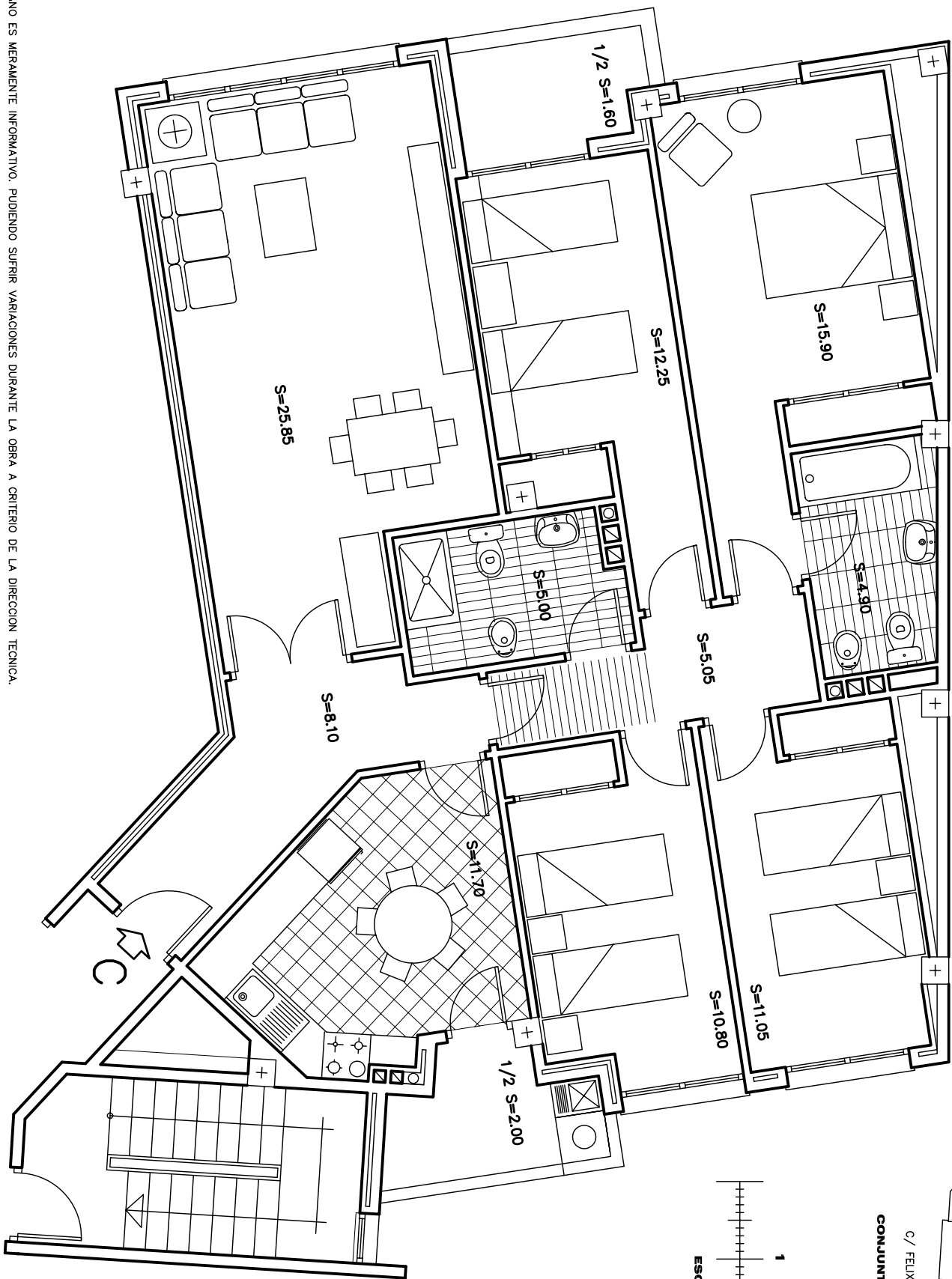


# Residencial "PARQUE LA ROSA 1"

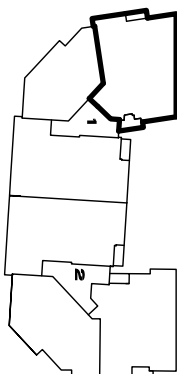
VIVIENDA TIPO C PLANTA 1º AL 5º (ESCALERA 1)

SUPERFICIE EDIFICADA 145,45 m.²

SUPERFICIE UTIL 114,20 m.²

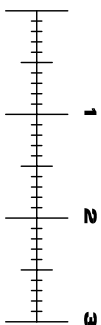


CALLE PEDRO DIAZ



C/ FELIX MARTI ALPERA  
CONJUNTO EDIFICACION

C/ FRANCISCO SALCILLO



ESCALA GRAFICA